



**CARDBOARD SHEETS SHREDDER**

**FULLTRITUR MINI**

[Factory](#) | [History](#) | [Chronology](#) | [Paper and cardboard industry](#) | [Other industries](#) | [N](#)

## ***1. PAPER, CARD AND GRAPHIC ART***

---

[1.1. PRODUCING BOOKLETS OF CIGARETTE ROLLING PAPERS](#)

---

[1.2. AUTOMATIC WIRE CUTTER FOR BUNDLES OF WASTE PAPER](#)

---

[1.3. PNEUMATIC TRANSPORT FOR PAPER, CARDBOARD, PLASTICS AND DERIVATIVES](#)

---

[1.4. PAPER COMPACTORS](#)

---

[1.5. PAPER AND CARDBOARD SHREDDERS](#)

---

[1.6. DUST FILTERS](#)

---

[1.7. ANCILLARY SYSTEMS](#)

---

c/ Ter s.n. Pol. Industrial · 17460 CELRÀ · Girona · Apart. correos 544 · 17080 Girona  
Tel. +34 972 214 454 · Fax +34 972 228 090 · E-mail: [proipa@proipafisa.com](mailto:proipa@proipafisa.com)

© 2008 Proipafisa | Web by Frame Girona S.L.



FULLTRITUR MINI

PROIPAFISA



PROCESOS INDUSTRIALES PAPEL Y FILTRACION, S.L.

**PROIPAFISA**

El Toral de la Sierra 10400 CELA (Cádiz)

Apdo. correo 464 11200 Cádiz ESPAÑA

Teléfono: **34 + 972.214404**

Fax: **34 + 972.228090**

E-MAIL: [grupo@proipafisa.com](mailto:grupo@proipafisa.com)



## INFORMATIVE NOTE

PRESENTATION

# FULLTRITUR MINI

The **FULLTRITUR MINI** follows a new idea of shredding in front of the productive machine.

It eliminates the waste sheet accumulations and their treatment out the die-cutter area.

The shredding operation can be made by the machine operator and in the working area with no translation needed.

The waste elimination, once it has been shredded, can be made by the existing waste lines or by a new low flow line. A suction line can eliminate the waste of different shredder unities, which can be laid out in the same area or in other adjacent areas.

The **FULLTRITUR MINI** is a very compact, solid, simple and safe equipment.

The cardboard sheet is introduced in the upper hole of the shredder.

The feeding hole has a dimension of 300 x 400 mm. and is design according to the security parameters to avoid finger pinch.

It comply the European machinery directives.

The shredding system follows the same principles of the PROIPAFISA FULLTRITUR, with the adaptations needed for a sheet by sheet shredder.

Its simple function design reduce the maintenance costs

The external equipment dimensions are 1,5 x 1,1 m. and 1,5 m. high.

The **FULLTRITUR MINI** can be supplied in three different versions:

- a)  
To work directly over a PROIPAFISA single line hopper or over an exiting waste transfer system. See drawing number 4304/41.14
- b)  
An waste extraction conveyor is incorporated to get out the shredded waste. See drawing number 4304/41.13
- c)  
This is an adapted model with a mechanism that allows the shredded waste suction in an automatic way. An independent suction installation is needed and it is used when pneumatic transfer is not installed or it is impossible to be added to the existing lines. See drawing numbers 4304/00.21

c/ Ter s/n Pol. Industrial 17460 CELRA (Girona)  
Apart. correos 544 - 17080 Girona ESPAÑA  
Teléfono: 34 + 972.214454  
Fax: 34 + 972.228090  
e. mail: proipa@proipafisa.com

PROCESOS INDUSTRIALES PAPEL Y FILTRACION, S.L

# PROIPAFISA



**“EC” DECLARATION OF CONFORMITY**

PROIPAFISA, S.L.  
Ter s/n P.I. Celrà  
17460-CELRÀ  
GIRONA – ESPAÑA-

**HEREBY DECLARES THAT THE MACHINERY DESCRIBED BELOW:**

**FULLTRITUR MINI**

Brand: **PROIPAFISA**

Model: **300 X 400**

Serial number: **09.24.0000**

complies with the provisions of the machinery directive 98/37/CE and its amendments 89/392/CEE, 91/368/CEE, 93/44/CEE and 93/68/CEE.

Also complies with the provisions of the following European directives:  
**2004/108/CE, 2006/95/CE.**

Compiles with the provisions of he following harmonized standards:

**EN-292-1:1991**

**EN-292-2:1991**

**EN-294:1992**

**EN-418:1992**

**EN-811:1996**

**EN-953:1997**

**EN-60204-1:1992**

**EN-61310-1:1996**

**EN-61310-2:1997**

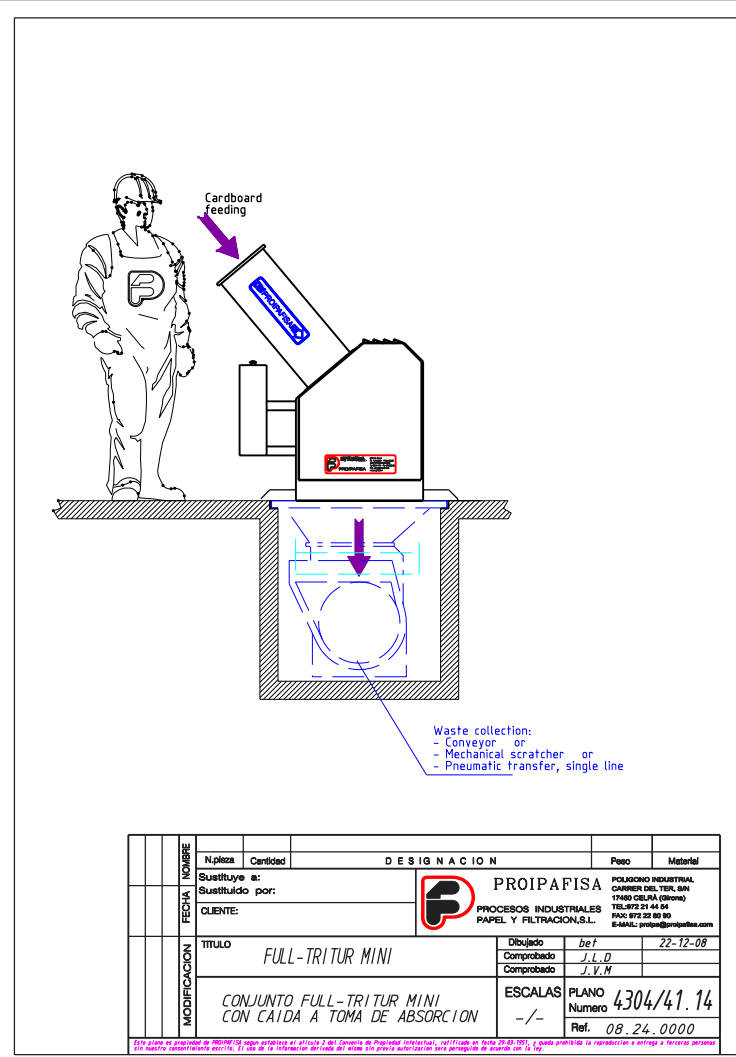
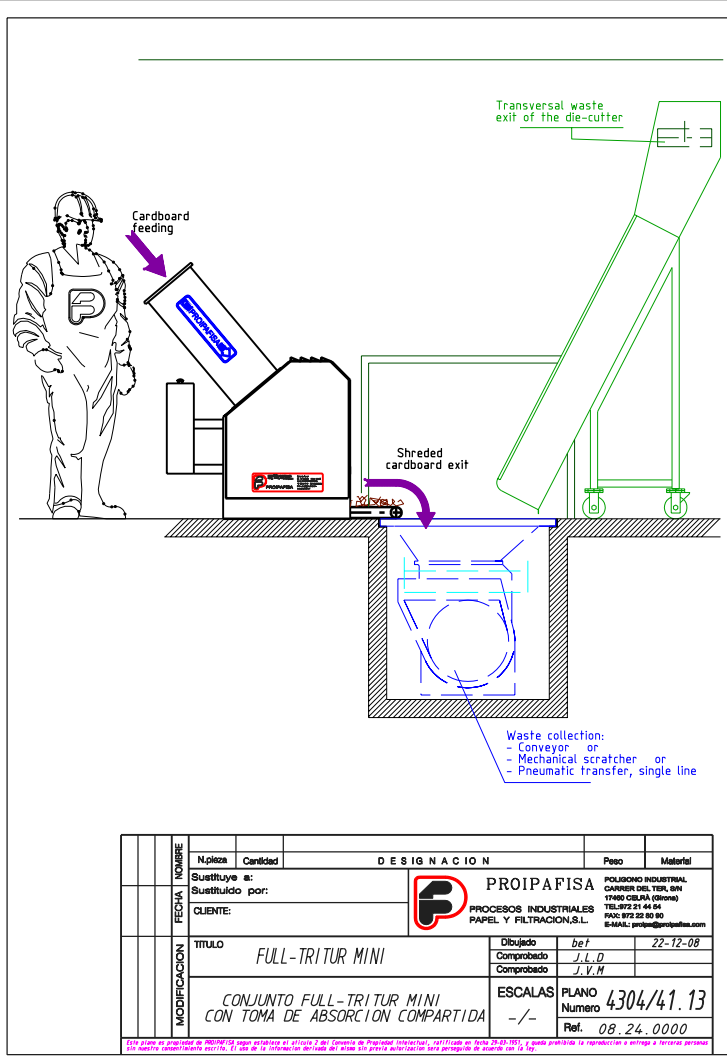
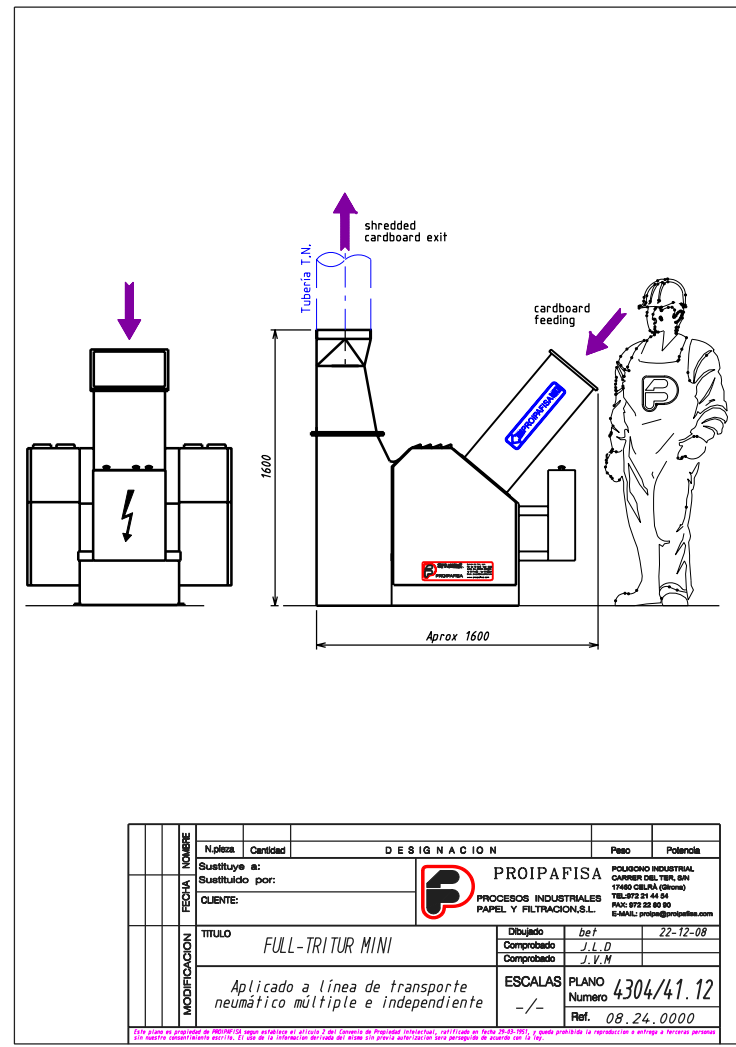
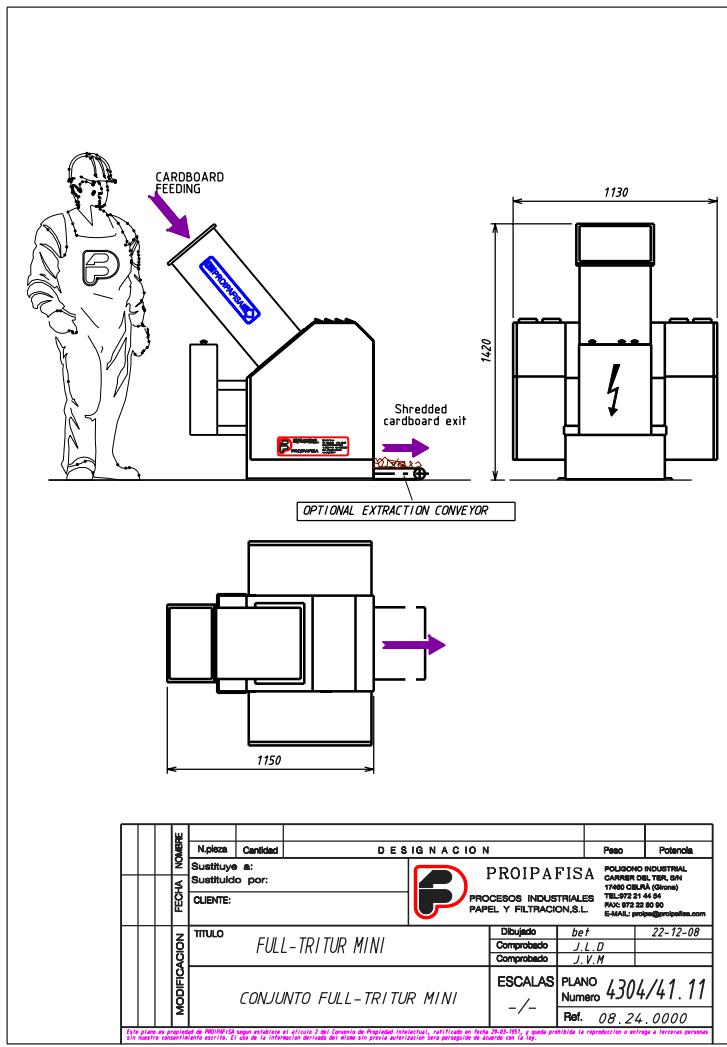
Also compiles with the following European Standard, national Standard and technical provisions:

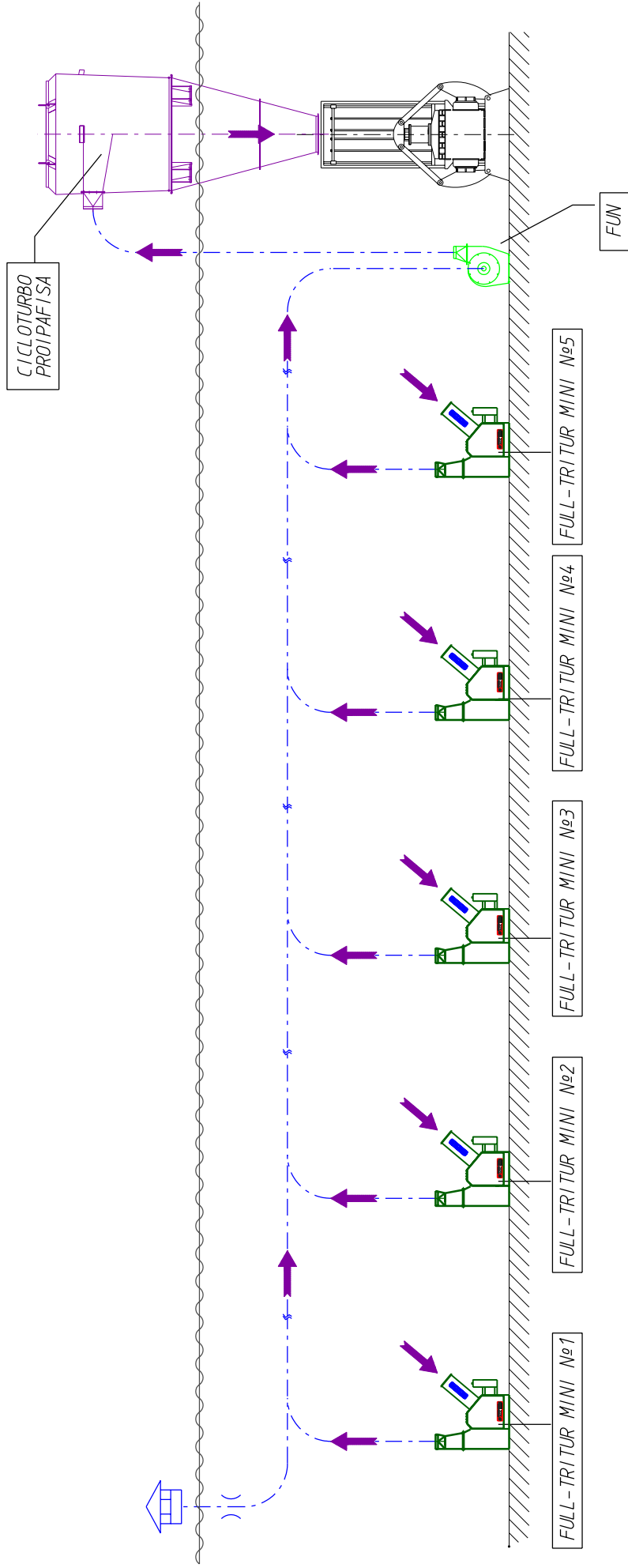



**Joaquim Vilanova Maurici**  
**MANAGER**

CELRÀ (Girona) NOVEMBER 2008



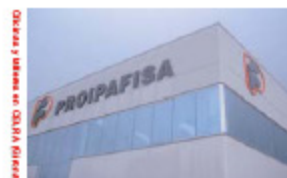




N.pieza	Cantidad	D E S I G N A C I O N		Peso	Material
Sustituye a:		 <b>PROIPA FISA</b> POLIGONO INDUSTRIAL CARRER DEL TER, S/N 17480 CELRA (Girona) TEL: 972 21 44 54 FAX: 972 22 80 90 E-MAIL: proipa@proipafisa.com			
CLIENTE:				PROCESOS INDUSTRIALES PAPEL Y FILTRACION, S.A.	
TITULO		FULL-TRITUR MINI		Dibujado	bet
MODIFICACION		SCHEME INSTALLATION SHREDDED WASTE SUCTION (Solution with several suction lines and independent)		Comprobado	J.L.D
				Comprobado	J.V.M
		PLANO		22-12-08	
		Numero		4304/00.21	
		Ref.		08.24.0000	

Este plano es propiedad de PROIPA FISA, según establece el artículo 2 del Convenio de Propiedad Intelectual, ratificado en España el 25-05-97, y queda prohibida la reproducción o entrega a terceros personas sin nuestro consentimiento escrito. El uso de la información contenida en este plano sin nuestra autorización será perseguido de acuerdo con la ley.





# FULLTRITUR

PROIPAFISA SHEET'S AND ROLL'S SHREDDER  
WORKS DOWN REVOLUTIONIZED

NEITHER PRODUCES NOISE NOR GENERATES DUST

c/ Ter s/n Pol. Industrial 17460 CELRA (Girona)  
Apart. correos 544 - 17080 Girona ESPAÑA  
Teléfono: 34 + 972.214454  
Fax: 34 + 972.228090  
e-mail: [proipa@proipafisa.com](mailto:proipa@proipafisa.com)

PROCESOS INDUSTRIALES PAPEL Y FILTRACION, S.L

# PROIPAFISA

